

# Memory Module Specifications

## KSM32RS8/8HE

8GB 1Rx8 1G x 72-Bit PC4-3200

CL22 Registered w/Parity 288-Pin DIMM

### DESCRIPTION

Kingston's KSM32RS8/8HE is a 1G x 72-bit (8GB) DDR4-3200 CL22 SDRAM (Synchronous DRAM) registered w/ parity, 1Rx8, ECC, memory module, based on nine 1G x 8-bit FBGA components. The SPD is programmed to JEDEC standard latency DDR4-3200 timing of 22-22-22 at 1.2V. Each 288-pin DIMM uses gold contact fingers. The electrical and mechanical specifications are as follows:

### FEATURES

- Power Supply: VDD = 1.2V
- VDDQ = 1.2V
- VPP = 2.5V
- VDDSPD = 2.41V to 2.75V
- Functionality and operations comply with the DDR4 SDRAM datasheet
- 16 internal banks
- Bank Grouping is applied, and CAS to CAS latency (tCCD\_L, tCCD\_S) for the banks in the same or different bank group accesses are available
- Data transfer rates: PC4-3200, PC4-2933, PC4-2666, PC4-2400, PC4-2133, PC4-1866, PC4-1600
- Bi-Directional Differential Data Strobe
- 8 bit pre-fetch
- Burst Length (BL) switch on-the-fly BL8 or BC4(Burst Chop)
- Supports ECC error correction and detection
- On-Die Termination (ODT)
- Temperature sensor with integrated SPD
- This product is in compliance with the RoHS directive.
- Per DRAM Addressability is supported
- Internal Vref DQ level generation is available
- Write CRC is supported at all speed grades
- CA parity (Command/Address Parity) mode is supported

### SPECIFICATIONS

CL(IDD)	22 cycles
Row Cycle Time (tRCmin)	45.75ns(min.)
Refresh to Active/Refresh Command Time (tRFCmin)	350ns(min.)
Row Active Time (tRASmin)	32ns(min.)
Maximum Operating Power	*
UL Rating	94 V - 0
Operating Temperature	0° C to +85° C
Storage Temperature	-55° C to +100° C

\*See IDD Specifications (page 2)

### Module Assembly

<b>DRAM:</b> Hynix (E-DIE)
----------------------------

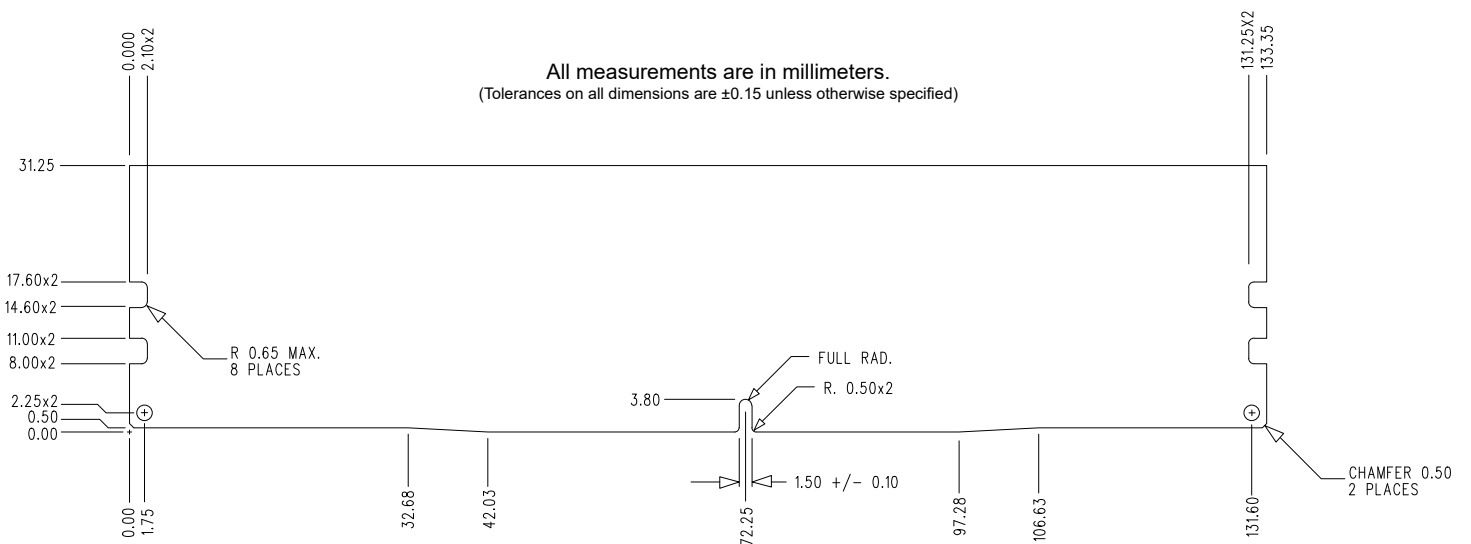
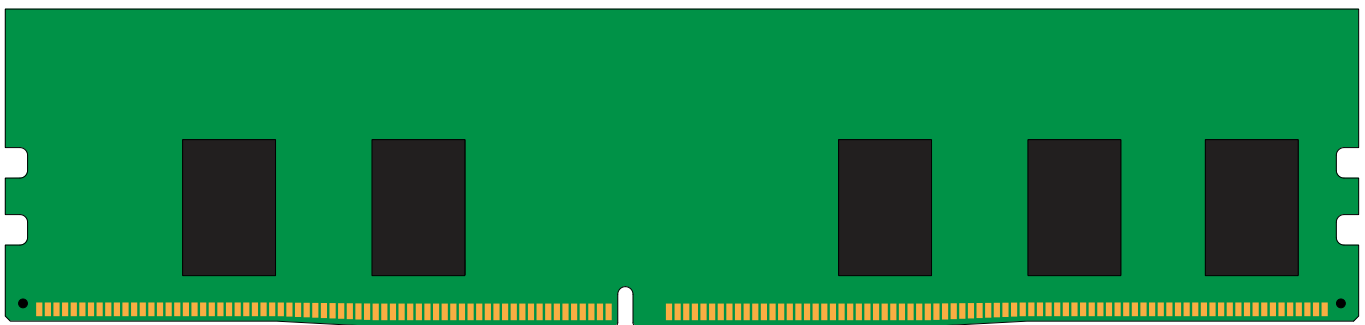
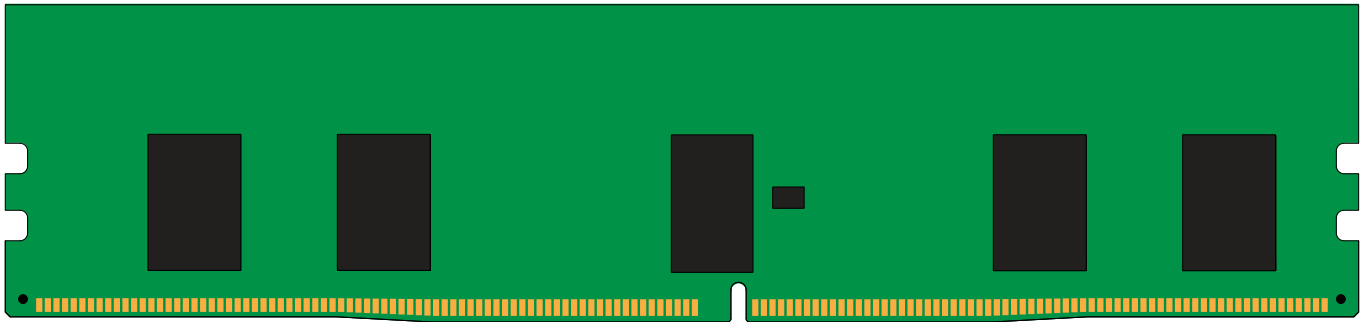
Continued >>

## IDD Specifications

IDD		unit
Symbol	3200	
IDD0	877	mA
IDD0A	877	mA
IDD1	1002	mA
IDD1A	1029	mA
IDD2N	769	mA
IDD2NA	769	mA
IDD2NT	814	mA
IDD2NL	670	mA
IDD2NG	769	mA
IDD2ND	751	mA
IDD2NP	769	mA
IDD2P	475	mA
IDD2Q	769	mA
IDD3N	1012	mA
IDD3NA	1012	mA
IDD3P	727	mA
IDD4R	1740	mA
IDD4RA	1776	mA
IDD4RB	1767	mA
IDD4W	1659	mA
IDD4WA	1722	mA
IDD4WB	1614	mA
IDD4WC	1659	mA
IDD4WP	1758	mA
IDD5B	2938	mA
IDD5F2	2236	mA
IDD5F4	1966	mA
IDD6N	211	mA
IDD6E	319	mA
IDD6R	121	mA
IDD6A	319	mA
IDD7	1857	mA
IDD8	94	mA

IPP		unit
Symbol	3200	
IPP0	27	mA
IPP1	27	mA
IPP2N	9	mA
IPP2P	9	mA
IPP3N	18	mA
IPP3P	18	mA
IPP4R	45	mA
IPP4W	45	mA
IPP5B	315	mA
IPP5F2	216	mA
IPP5F4	180	mA
IPP6N	27	mA
IPP6E	45	mA
IPP6R	18	mA
IPP6A	36	mA
IPP7	135	mA
IPP8	9	mA

## MODULE DIMENSIONS



The product images shown are for illustration purposes only and may not be an exact representation of the product.  
Kingston reserves the right to change any information at anytime without notice.